



PUFFIN



Puffins are undeniably cute and full of character, which explains why they have been dubbed the clowns of the sea. I find them very endearing and, to me, they represent wildlife by the Atlantic at its best. I really enjoyed making this little puffin, so I hope you will too.



Materials

- 20 x 15cm (8 x 6in) of felt in black
- 10 x 15cm (4 x 6in) of felt in white
- 10 x 10cm (4 x 4in) of felt in orange
- Embroidery threads in black, white or very light grey and orange
 - 15g (½oz) toy filling
- Approximately 33cm (13in) of 18-gauge florist wire

Tools

- Scissors (paper, fabric and embroidery)
 - Pen or pencil
 - Embroidery needle
 - Pins
- Long-nose cutting pliers
 - Glue stick

Templates

- The puffin templates are on page 91. You will need:
 - 2 bodies in black
 - 4 wings in black
 - 1 breast and 2 eyes in white
 - 2 beaks in orange
 - 4 feet in orange



Instructions

- 1 Cut out the templates and transfer to the felt, following the instructions on page 10.
- 2 Embroider one of the black wings with curved lines of white (or light grey) fly stitch. As an alternative, for an easier method, you could simply make lines of backstitch and add small straight stitches on either side to resemble fly stitch (see page 32).
- 3 Sew one plain black wing on the back of the embroidered wing using blanket stitch and black thread. Repeat steps 2 and 3 for the second wing.
- 4 Sew the two beak pieces together with a small blanket stitch and orange thread. Add a little toy filling inside but keep the beak quite flat and leave the end open.
- 5 Place the eye piece on the black body piece and attach using the appliqué technique explained on page 13. Embroider the eye with satin stitch and a black thread to create a diamond shape and add a straight line of backstitch (see figure 1).
- 6 Embroider the tail with a line of fly stitches in white. Repeat steps 5 and 6 on the other body piece.
- 7 Attach the two black sides of the puffin using blanket stitch in black thread, starting from the chest at point A and going to the beak. Insert the beak between the two body layers and stitch through everything to hold the beak in place. Carry on stitching down the neck to point B. Add toy filling to the head and end your stitching at point B with a knot. Embroider a black triangle on both sides of the beak with satin stitch.
- 8 Close the dart in the white breast piece using a small whip stitch and white thread (see figure 2). Attach the white piece to the black body, matching the seam and dart at point A. Work blanket stitch all the way around the white piece with black thread.
- 9 Place each wing on one side of the body and attach with small black stitches, going into your previous blanket stitch to keep it discreet. Sew only on the curve of the wing and keep the pointy end of the wing detached from the body.
- 10 Start sewing the back of the bird with a black blanket stitch. Add toy filling as you go and close completely.
- 11 Add the wire legs very low down the puffin's body, using the technique shown on page 14. There is no need to shape the toes, though. Simply make a rounded shape instead (see figure 3). There is no need to wrap them with florist tape either, although you can if you prefer. The legs need to be around 2cm (¾in) long.
- 12 Attach the orange webbed feet to the wire legs. For each foot, place two of the felt feet pieces together with the wire foot in between, and work blanket stitch all around the edge in orange thread, enclosing the wire foot completely (see figure 4).

Fig. 1



Fig. 2



Fig. 3

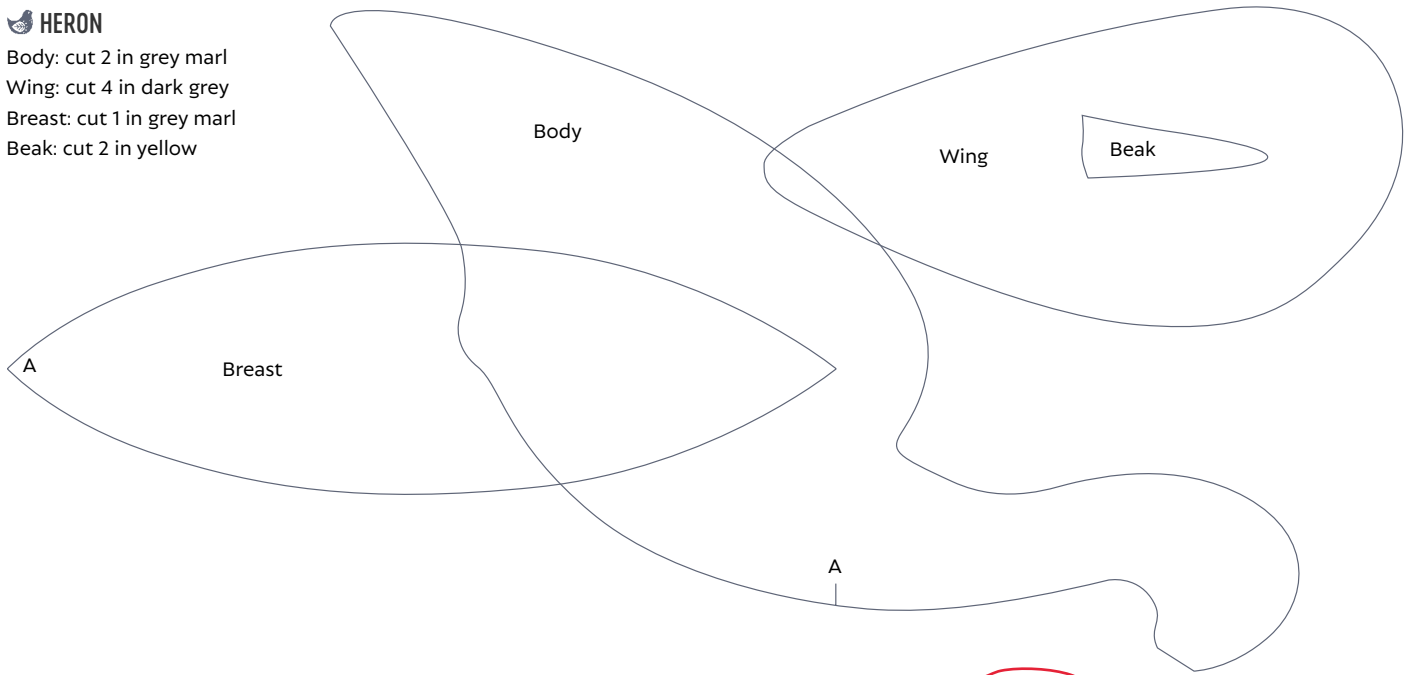


Fig. 4



 **HERON**

Body: cut 2 in grey marl
Wing: cut 4 in dark grey
Breast: cut 1 in grey marl
Beak: cut 2 in yellow



 **PUFFIN**

Body: cut 2 in black
Breast: cut 1 in white
Wing: cut 4 in black
Beak: cut 2 in orange
Foot: cut 4 in orange
Eye: cut 2 in white

